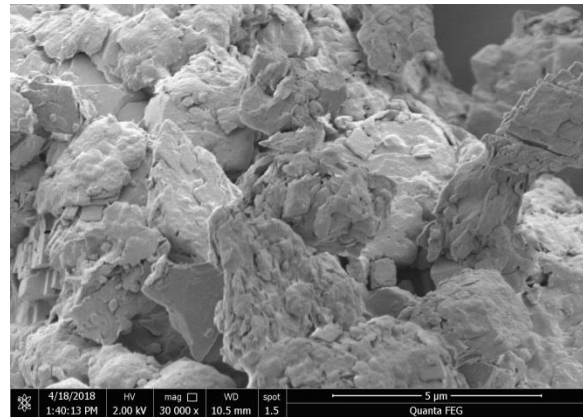
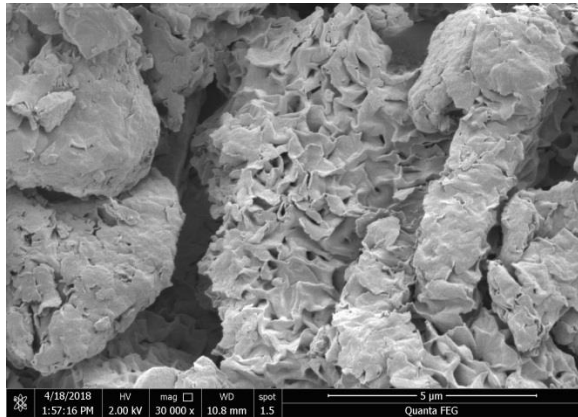


GEL

Technical Data Sheet

DESCRIPTION

GEL is a unique blend of clay minerals of the montmorillonite family which has low grit and is especially useful for the drilling industry. The particularly desirable quality of this clay is the high yield point which allows higher carrying capacity at lower annular velocities.



TYPICAL PHYSICAL PROPERTIES:

Yield, (bbls/ton)	110
Viscosity, ₂	18
Plastic Viscosity,.....	3
Yield Point, ₁	12
Water Loss, (cc)	20
Moisture	10%
+200 Mesh (Wet Screen).....	4%

1 According to test procedure in API 13A and 13B..
 2 Fann Viscometer dial reading at 600 RPM.

PACKAGING

Available in 50 lb. (3-ply natural bags),shipped on 42x42 non-returnable pallets. Also available in bulk bags and bulk.

Lhoist – Amargosa Clay Operation
 498 E. Invite Road
 P.O. Box 86
 Amargosa Valley, NV 89020
 Phone: 775-372-5341
<http://www.lhoist.com> <http://www.imvnevada.com>