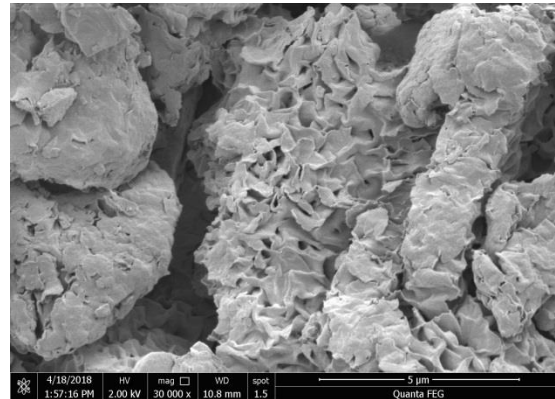
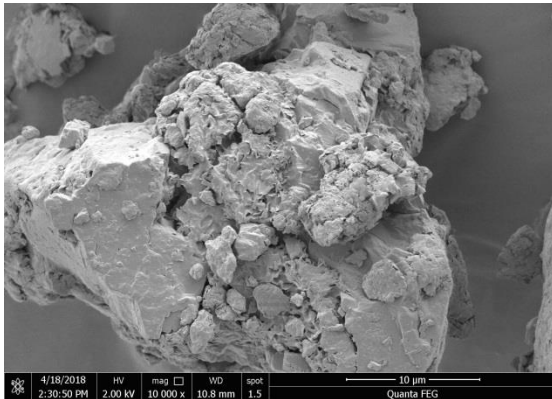


IGB

Technical Data

DESCRIPTION

IGB is calcium bentonite, a clay mineral of the montmorillonite family, which has low grit and is specially ground for the industrial market. Calcium bentonite exhibits a much lower swell in water than sodium bentonite.



TYPICAL PHYSICAL PROPERTIES

Appearance.....	fine, off white powder
Particle Size, Dry Screen.....	94% - 200 mesh
Wet Screen	99% - 200 mesh
Moisture	11%
Oil Absorption (ASTM D281)	37
L.O.I. at 1000° C	20.3% avg
Viscosity*	850 cP avg

*Viscosity measured using Brookfield viscometer at 10 rpm mixed at 6% solids with very high shear
The above properties are typical and not intended to be product specifications.

PACKAGING

Available in 50 lb. (3-ply natural bags).
Shipped on 42x42 non-returnable pallets.

STORAGE

Store in a cool, dry place protected from outside weather conditions.

Lhoist – Amargosa Clay Operation
498 E. Invite Road
P.O. Box 86
Amargosa Valley, NV 89020
Phone: 775-372-5341
<http://www.lhoist.com> <http://www.imvnevada.com>